

Measure & Develop Students' Essential Success Skills

Your institution identifies the skills, knowledge, attitudes, and attributes every student should have upon graduation. You regularly assess many of these skills to ensure students are meeting benchmarks, but what about critical thinking, problem solving, and written communication?

Just like core subjects, these essential skills can be measured and taught. CAE's performance-based [Collegiate Learning Assessment \(CLA+\)](#) measures essential success skills and provides a more complete picture of your students' readiness for the rigors of today's academics and their next steps following graduation.

CLA+ provides insights into student proficiency with the essential success skills:



Analysis &
Problem Solving



Data
Literacy



Writing
Effectiveness



Critical Reading
& Evaluation



Writing
Mechanics



Critiquing an
Argument

Critical thinking and analysis, problem solving, teamwork, and communication through writing and speaking have consistently been ranked by employers as the **most important skills** over time.

AAC&U, How College Contributes to Workforce Success, 2021



Help Students Improve the Skills That Will Enable Them to Achieve Their Education & Career Goals

Contact CAE for more information and to schedule a consultation.

info@cae.org | 212.661.5800

Authentic Assessment That Put Students' Essential Success Skills to Work

To build students' essential success skills, educators must first know the areas in which students need support. CLA+ authentically measures the essential academic and career readiness skills of critical thinking, problem solving, and effective written communication.

CLA+ can be used for formative and summative purposes, including evaluating how well students have developed essential skills at the beginning and/or end of a particular class or academic year, or to measure growth over multiple years.

How Does CLA+ Work?



Real-World Scenarios

Students are situated in real-world scenarios that require the application of critical thinking, problem-solving, and written communication skills.



Recommend a Solution

Using supplied reference materials, students must organize information, define the problem, address issues, consider and evaluate solutions, and recommend and defend a course of action.



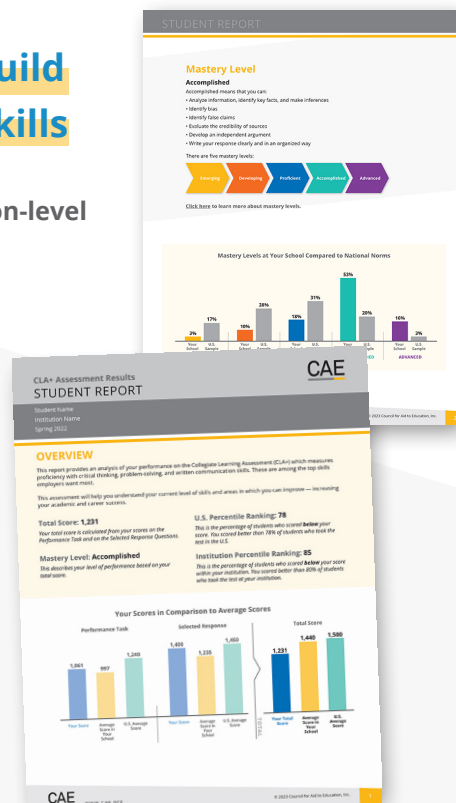
No Single "Right" Answer

Student scores reflect a range of plausible and effective response strategies — a process that, by design, mimics real-world, decision environments.

Actionable Data to Build Students' Essential Skills

Detailed student and institution-level reports can be used to:

- Identify individual student and institution-wide mastery of essential skills.
- Evaluate how your students compare to peers in your institution and across CAE's extensive data set.
- Measure the effectiveness of specific curriculum, interventions, and programs.
- Provide evidence-based microcredentials.



CAE Also Supports Student Growth with:



- Custom assessments including performance-based assessments for subject areas
- Critical thinking instructional materials and practice performance tasks
- Professional development to help educators apply the results of CAE assessments and incorporate essential skills into course content